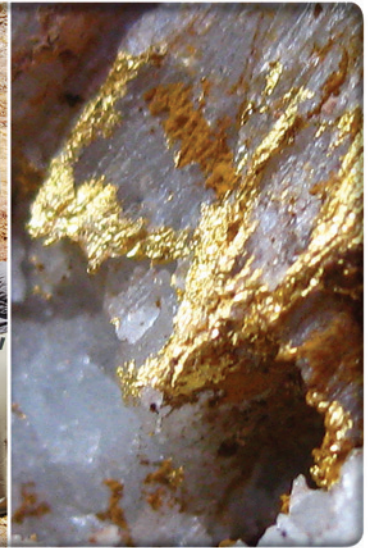




**AMERIX**  
PRECIOUS METALS CORP.

40 University Avenue  
Suite 710  
Toronto, Ontario M5J 1T1  
647-260-0470  
www.amerixcorp.com

Amerix Precious Metals  
(APM: TSX-V)  
(NJGN: FWB Frankfurt)

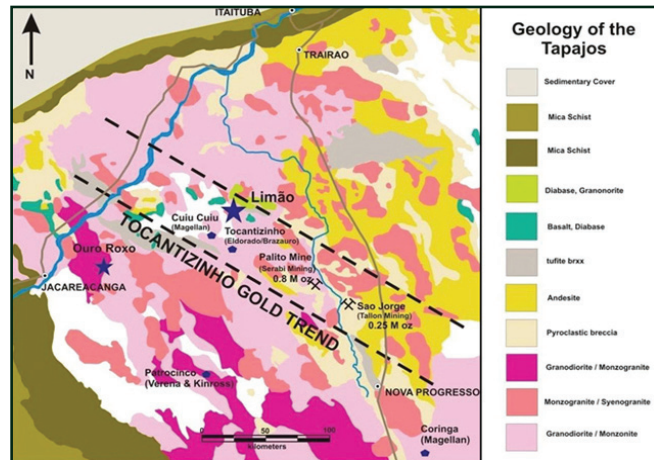
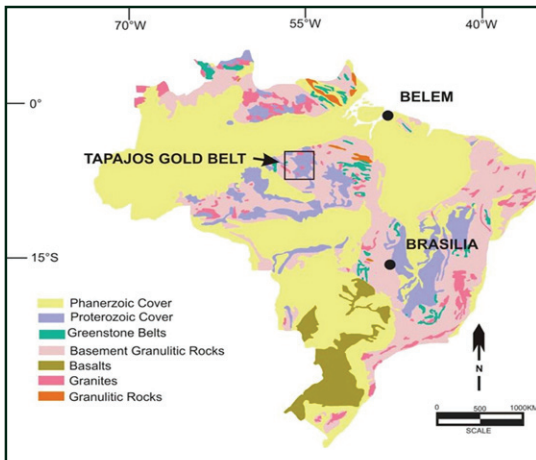


## Highlights of Amerix

Financed to Explore the High Grade Gold at the Limão Project in the Tapajos Gold Region, Central Brazil

### Regionally

- Located in the mining friendly Tapajos Region of Brazil, Pará State
- One of the largest under-explored alluvial gold areas in the world. Production from streams over the past 40 years is estimated to be 20 – 30 million ounces
- Nearby Tocantinzinho Property purchased by Eldorado Gold for U.S \$123 million and a feasibility study is underway.



## Limão Gold Project

- Large Property ~10,000 hectares
- Gold Mineralization hosted in Alkalic Intrusive Rocks
- 2011 sampling confirms high grade gold
- 11 samples of pyritic rich syenite averaged 38 g/t Au or 1.12 oz/t Au
- Drilling in the late '80s returned impressive gold intercepts
  - 47.0 g/t Au over 13 meters
  - 18.7 g/t Au over 6.8 meters
- Sample of old drill core returned 34.77 g/t Au
- Completing the airborne geophysics over the property



Syenite float sample 106 g/t Au or 3.09 oz/t Au



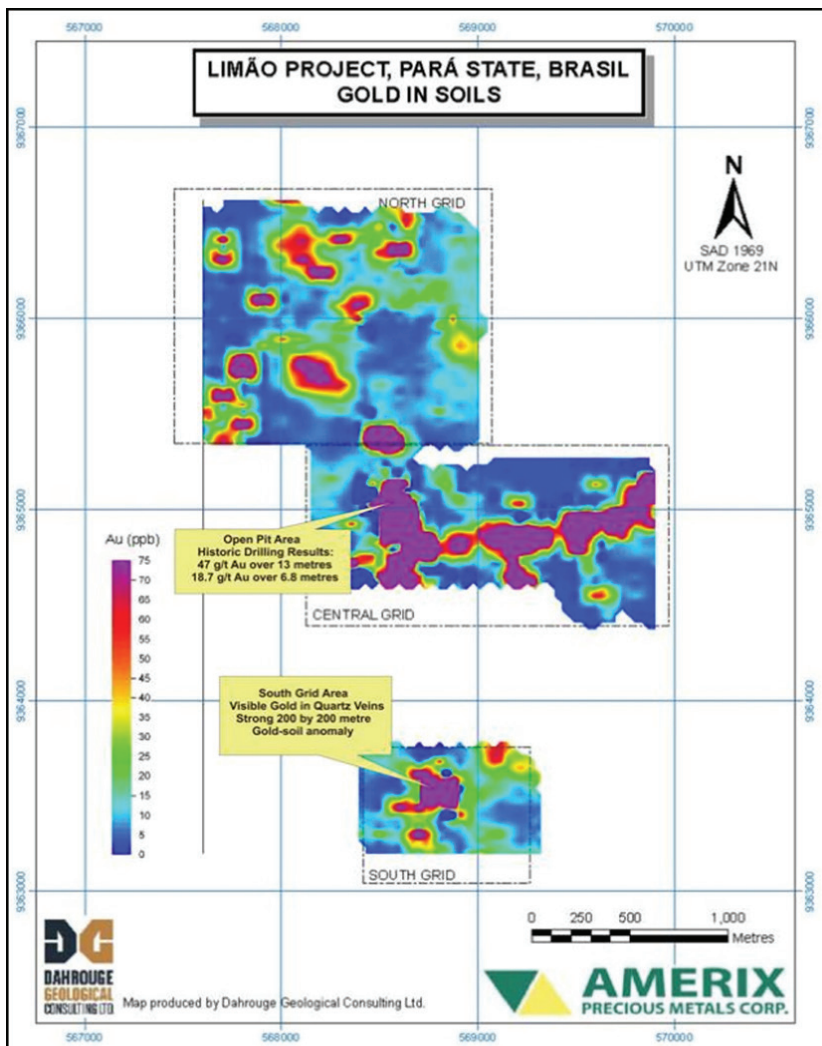
Disseminated Gold in Syenite 34.77 g/t Au

## Historic Drill Hole at Limão

Diamond Drill DDH-01 Sample Intersections					
Sample #	From (m)	To (m)	Interval (m)	Au ppm	Cu ppm
34	29.59	30.09	0.50	2.00	169
35A	30.09	31.09	1.00	0.10	43
35B	31.09	31.64	0.55	61.70	4518
36A	31.64	32.64	1.00	13.80	3898
36B	32.64	33.14	0.50	55.70	3082
37A	33.14	34.14	1.00	24.45	>5000
37B	34.14	34.74	0.60	67.55	>5000
38A	34.74	35.74	1.00	61.65	>5000
38B	35.74	36.24	0.50	36.30	1107
39A	36.24	37.24	1.00	20.80	283
39B	37.24	38.24	1.00	66.10	>5000
39C	38.24	39.24	1.00	53.20	>5000
40A	39.24	40.24	1.00	43.70	>5000
40B	40.24	41.24	1.00	25.75	>5000
40C	41.24	42.29	1.05	144.50	>5000
41A	42.29	43.29	1.00	22.60	>5000
41B	43.29	44.14	0.85	24.30	1816
42A	48	48.39	0.39	0.10	34
43A	48.39	49.39	1.00	0.10	31
43B	49.39	50.39	1.00	0.15	18
43C	50.39	51.44	1.05	0.15	23
44A	51.44	52.44	1.00	1.00	47
44B	52.44	53.44	1.00	1.50	64
44C	53.44	54.49	1.05	0.25	21
45	54.49	55.12	0.63	0.10	28
* Note that only 25.23 meters of core was sampled in DDH-01					

## Highlights from recent Exploration Programs defined and reconfirmed numerous gold targets at Limão

- 2009 and 2010 exploration programs include 1841 one meter holes and rock chip samples
- Several gold-in-soil anomalies were defined
- Visible gold in quartz veins on southern grid are confirmed by high grade gold results
- New gold zone with visible gold in veins located 1500 meters south of high grade historic results
- 1841 one meter deep auger holes in three main areas defining numerous gold-in-soil anomalies
- Airborne geophysics completed in 2011 and follow-up geochemical sampling is underway
- Drilling expected in early 2012



## Capital Structure

As at September 30, 2011

Trading Symbols	<b>APM: TSX-V</b> <b>NJGN: FWB Frankfurt</b>
Shares Outstanding	63,693,434
Warrants Outstanding	12,591,762
Options Outstanding	5,191,660
Unit Purchase Options	
Shares	403,997
Warrants	201,999
Fully Diluted	83,265,852
Management Position	5,158,665
Corporate Website	<a href="http://www.amerixcorp.com">www.amerixcorp.com</a>